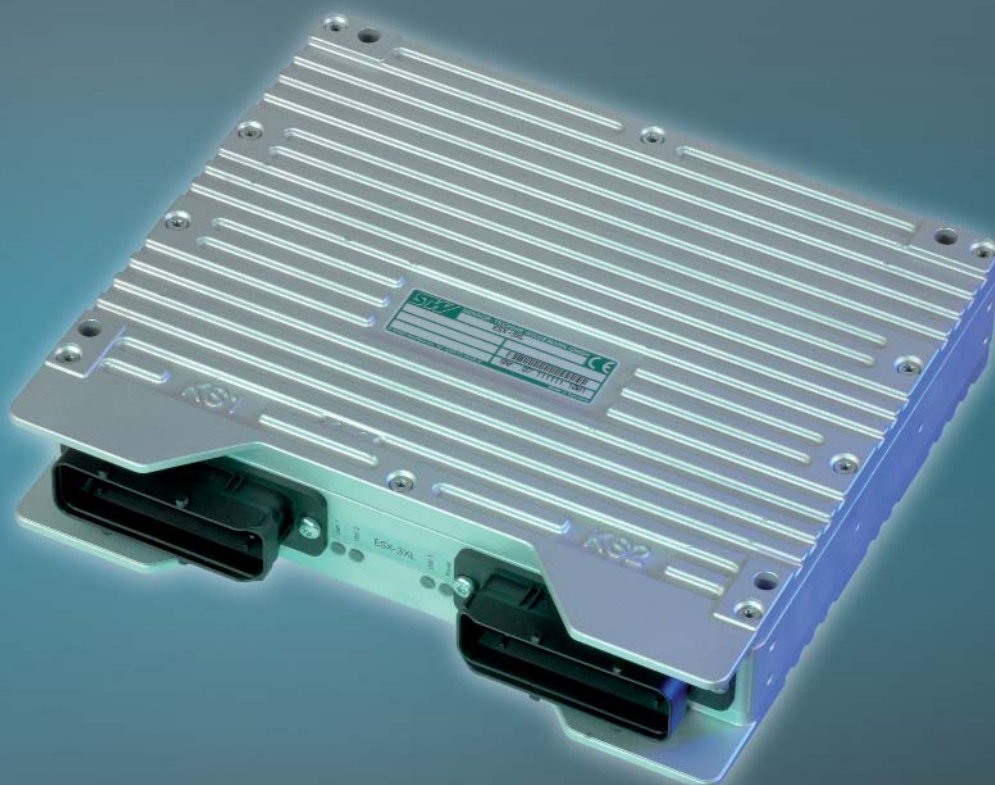


Pioneering new technologies
Pioneering new technologies



Sensor-Technik Wiedemann GmbH
Mobile Controllers and Measurement Technologies

ESX[®]-3XL



Freely programmable controllers for
vehicles and machines with CAN-Bus



ESX®-3XL - Technical Data

Processor system	
Processor	32 Bit Controller, 150 MHz, separate system supervisor with programmable Watchdog
SRAM	4 MByte external memory, 80kByte internal controller memory
Flash	4 MByte external Flash memory, 2 MByte internal Controller-Flash memory
EEPROM	32 kByte

Interfaces	
CAN	4 discrete CAN 2.0 B interfaces Full CAN, Low-/High-Speed up to 1 MBit/s
RS232	Programmable baud rate up to 115 kBit/s
Extensibility	6 modules for additional in- and outputs or other functionalities

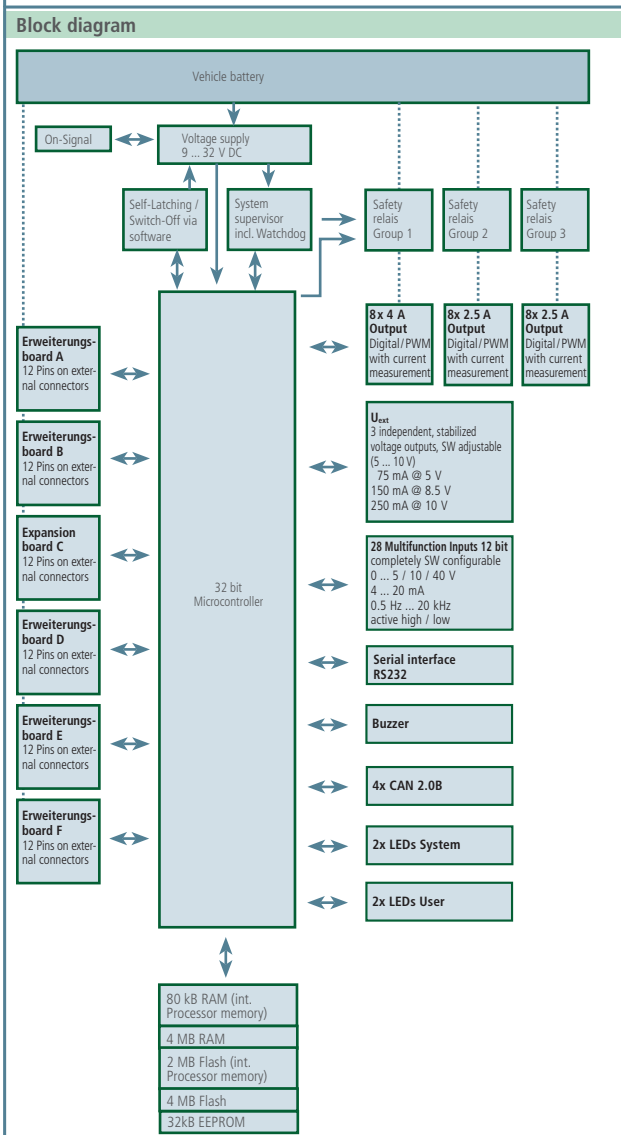
In-/Outputs (max. 124)	
Multifunction Inputs	max. 28 analog inputs , 4 ... 20 mA or 0 ... 5 / 10 / 40V, 12 Bit, cut-off frequency 100 Hz, short circuit protected, diagnosable max. 28 digital inputs , high/low active switchable, short circuit protected, diagnosable max. 28 RPM inputs , high/low active switchable, cut-off frequency 20 kHz, short circuit protected, diagnosable
Digital-/PWM outputs with current measurement	8x 4 A , high-side, 0 ... 100%, short circuit protected, diagnosable 16x 2.5 A , high-side, 0 ... 100%, short circuit protected, diagnosable
PVG outputs	or 16x PVG for Danfoss valves (20% U_B ... 80% U_B)
Voltage outputs	3 independent, stabilized voltage supplies programmable 5 V ... 10 V
Extensibility	max. 6 modules , up to 12 In- / Outputs each, e.g. for digital or analog I/Os, Input for encoder, motor bridge, communication interfaces or customer specific design

System data	
Voltage supply	8 ... 32 V DC
Indicators	Buzzer, 4 Status LEDs (dichromic)
Current consumption	200 mA (24 V) ... 350 mA (12 V), Stand-by < 1mA

Mechanical data	
Connector	2 x 81 pol. automotive type (Tyco / AMP)
Chassis	IP 65 (opt. IP 67), die-cast aluminium, GORE-TEX®-breating filter for pressure equalization, condensation protection
Weight	approx. 2.5 kg (5.5 lbs)
Dimension	approx. 248 mm x 217 mm x 51 mm (ca. 9.76" x 8.54" x 2.01")

Environmental requirements	
Standards	According to automotive, agricultural and construction industry standards; CE-conformity
Operating temperature	-40°C ... +85°C (-40°F ... +185°F) chassis temperature

Software	
Programming	Fast and simple application development Comfortable „C“-API-library with CoDeSys 3.0



Sensor-Technik Wiedemann GmbH
Steuer- und Regelelektronik
 Am Bärenwald 6
 87600 Kaufbeuren
 GERMANY
 Telephone +49 (0) 83 41 - 95 05 - 0
 Telefax +49 (0) 83 41 - 95 05 - 55
 E-Mail info@sensor-technik.de
 Internet www.sensor-technik.de

STW-Technic, LP
Mobile Controllers and
Measurement Technologies
 3000 Northwoods Pkwy. Suite 260
 Norcross, GA 30071 USA
 Telephone +1 (770)242-1002
 Telefax +1 (770)242-1006
 E-Mail sales@stw-technic.com
 Internet www.stw-technic.com

Sensor-Technik UK Ltd.
 Unit 10, The Granary
 Mill Road, Sharnbrook
 Bedfordshire MK44 1NN
 ENGLAND
 Telephone +44 (0)1234-7820-49
 Telefax +44 (0)1234-7820-56
 E-Mail sales@sensor-technik.co.uk
 Internet www.sensor-technik.co.uk